



WOMENSWEAR RANGE
SPRING/SUMMER 2019



Featured Collections

By Williamson-Dickie



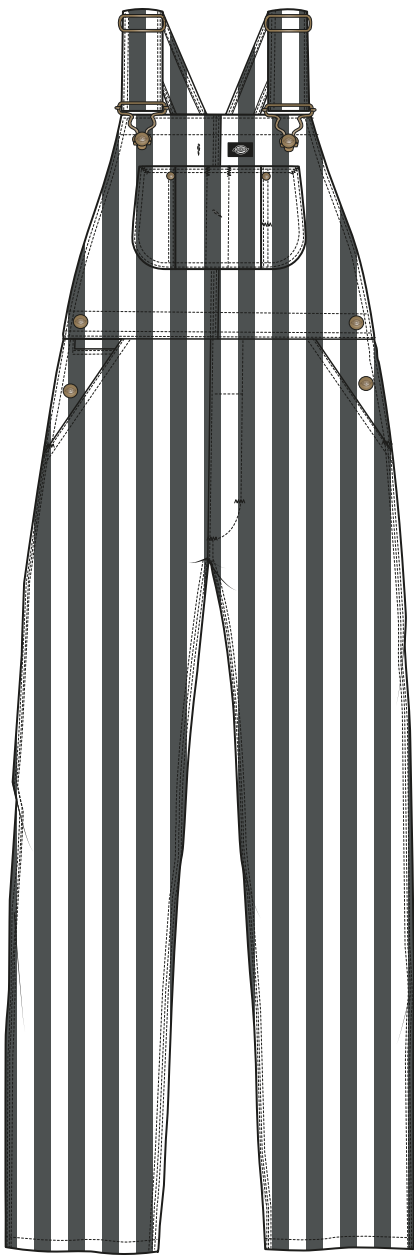
FREDONIA

ARTICLE NO. 01310033W

Start ship date: 15/02/19



CUS | CUSTARD



CH | CHARCOAL

WOMEN'S REGULAR FIT BIB
65% POLYESTER, 35% COTTON, 205GSM
ENZYME WASH, LARGE BIB POCKET, DOUBLE TOOL POCKET, HAMMER LOOP

SIZES: XS, S, M, L, XL

ROSLYN

ARTICLE NO. 05200340W
Start ship date: 15/02/19



CUS | CUSTARD



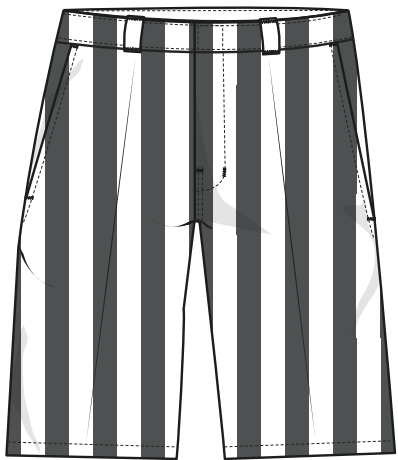
CH | CHARCOAL

REGULAR FIT REVERE COLLAR SHIRT
100% VISCOSE
PRINTED DETAIL, SOFTNER WASH

SIZES: XXS, XS, S, M, L, XL

HAGUE

ARTICLE NO. 01220145W
Start ship date: 15/02/19



CH | CHARCOAL

SLIM STRAIGHT SHORT
65% POLYESTER, 35% COTTON, 205GSM
SITS BELOW THE WAIST, LOWER RISE, ENZYME WASH

SIZES

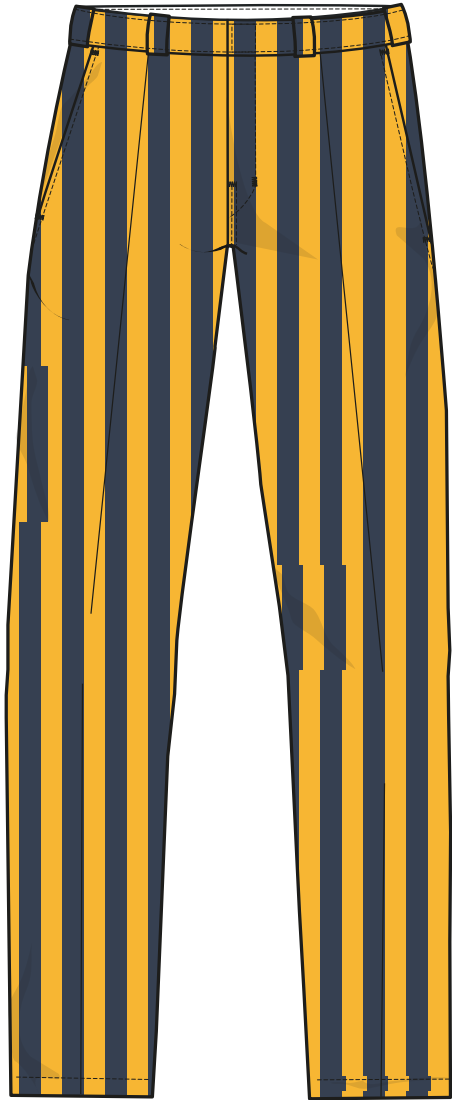
WAIST	28	30	31	32	33	34
	•	•	•	•	•	•



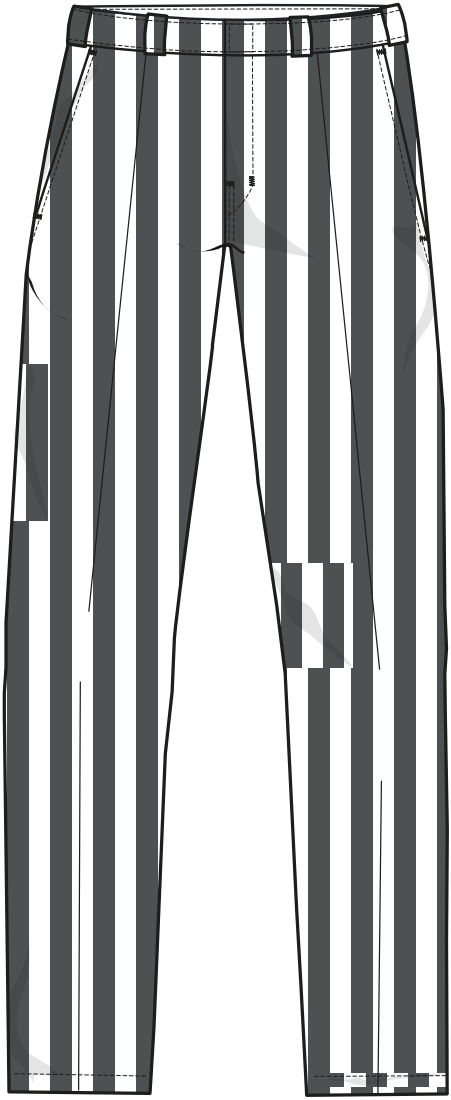


WP873 WIDE STRIPE

ARTICLE NO. 01210167W
Start ship date: 15/02/19



CUS | CUSTARD



CH | CHARCOAL

STRAIGHT LEG WORK PANT
65% POLYESTER, 35% COTTON, 205GSM
SITS BELOW THE WAIST, LOWER RISE, ENZYME WASH

SIZES					
WAIST	28	30	31	32	33
INSEAM					
30	•	•	•	•	•
32	•	•	•	•	•



BROCTON

ARTICLE NO. 03200178W

Start ship date: 15/02/19



OYO | OYSTER GRAY



UC | SCOUT

REGULAR FIT HOODY
100% COTTON CORD, 285GSM
SILICON WASHED

SIZES: XXS, XS, S, M, L, XL

BAYVILLE

ARTICLE NO. 05200345W

Start ship date: 15/02/19



OYO | OYSTER GRAY



UC | SCOUT

REGULAR FIT LONG SLEEVE SHIRT

100% COTTON CORD, 285GSM
SILICON WASHED

SIZES: XXS, XS, S, M, L, XL

AMENIA

ARTICLE NO. 08-440074

Start ship date: 15/02/19



UC | SCOUT



OYO | OYSTER GRAY

6 PANEL UNSTRUCTURED CAP

100% COTTON CORD
WOVEN LABEL, EMBROIDERED EYELET DETAILS
HOOK-AND-LOOP FASTENING

ONE SIZE



MARK FOSTER



Mark grew up in Lancashire, Northern England. He started Skateboarding when he was 14 and went to various art colleges in Lancashire after he finished school. He went to Goldsmiths College in South London when he was 20 and completed a BA in Design Studies.

After college he immersed myself in the world of Skateboarding. He worked as a sales director at Slam City Skates in London. Whilst there he started his own brand, Heroin Skateboards.

He's done artwork for companies including Toy Machine, Real, Foundation, Zero, Black Label, Creature, Baker and Deathwish.

In 2003 he left Slam City and started Landscape Skateboards, in 2006 he helped to start and became the art director of Altamont Apparel.

In 2011, he moved to Los Angeles and Heroin started being distributed by Baker Boys Distribution. He also started hosting a radio show called Fos FM. He's designed five collaborative shoes with Emerica footwear. He lives and works in LA.

WARRENSBURG

ARTICLE NO. 03200177W
Start ship date: 15/02/19

**DICKIES
BY FOS**



HEA | HEATH

REGULAR FIT OVER THE HEAD HOODY
60% COTTON, 40% POLYESTER, 345GSM
SMALL CHEST PRINT, LARGE BACK PRINT

SIZES: XXS, XS, S, M, L, XL

PURLING

ARTICLE NO. 06210630
Start ship date: 15/02/19



GYM | GRAY MELANGE

REGULAR FIT SWEATSHIRT
60% COTTON, 40% POLYESTER, 345GSM
SMALL CHEST PRINT

SIZES: XXS, XS, S, M, L, XL



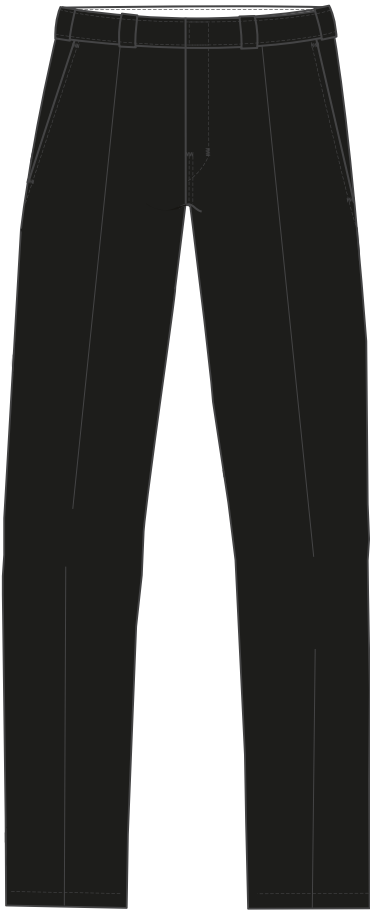
Pants

By Williamson-Dickie



ORIGINAL 874[®] WORK PANT

ARTICLE NO. 874W
Start ship date: 15/12/18



BK | BLACK



KH | KHAKI



WH | WHITE

ORIGINAL FIT STRAIGHT LEG WORK PANT
65% POLYESTER, 35% COTTON, 8.5oz TWILL
SITS AT WAIST, WRINKLE RESISTANT, STAIN RELEASE

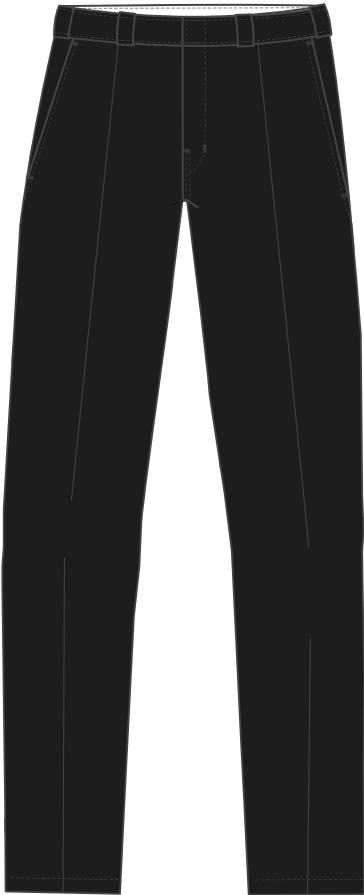
SIZES

WAIST	28S	28R	30S	30R	31S	31R	32S	32R	33S	33R
CORE										
BK	•	•	•	•	•	•	•	•	•	•
KH	•	•	•	•	•	•	•	•	•	•
WH	•	•	•	•	•	•	•	•	•	•

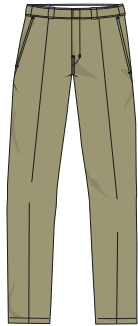


SLIM STRAIGHT WORK PANT

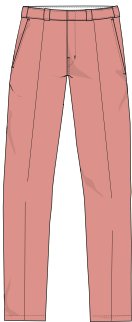
ARTICLE NO. WP873W
Start ship date: 15/12/18



BK | BLACK



KH | KHAKI



FLA | FLAMINGO

SLIM FIT STRAIGHT LEG WORK PANT
65% POLYESTER, 35% COTTON, 8.5OZ TWILL
SITS BELOW THE WAIST, LOWER RISE
WRINKLE RESISTANT, STAIN RELEASE

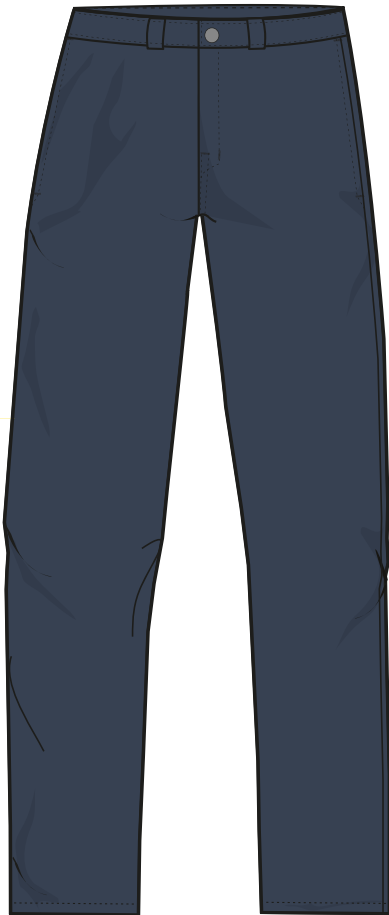
SIZES

WAIST	28S	28R	30S	30R	31S	31R	32S	32R	33S	33R
CORE										
BK	•	•	•	•	•	•	•	•	•	•
KH	•	•	•	•	•	•	•	•	•	•
FLA	•	•	•	•	•	•	•	•	•	•



INDUSTRIAL WORK PANT

ARTICLE NO. WP894W
Start ship date: 15/12/18



NV | NAVY

SLIM FIT STRAIGHT LEG WORK PANT
65% POLYESTER, 35% COTTON, 7.3oz MECHANICAL STRETCH TWILL
MECHANICAL STRETCH TWILL FABRIC FOR RANGE OF MOTION AND FLEXIBILITY,
REINFORCED BELT LOOPS, TACK BUTTON CLOSURE AT CENTRE FRONT, REINFORCED
CROTCH (EXTRA STITCHING) TO REDUCE BLOW OUTS BLACK STRIPE POCKETING AND
A CONTRAST RED ZIPPER

SIZES						
WAIST	26	28	30	31	32	33
INSEAM						
30	•	•	•	•	•	•
32	•	•	•	•	•	•



EDWARDSPORT

ARTICLE NO. 01210121W

Start ship date: 15/12/18



DKO | DARK OLIVE



CF | CAMOUFLAGE

SLIM FIT COMBAT PANT
100% COTTON RIPSTOP, 250GSM
ENZYME AND SILICON WASHED
2 CARGO POCKETS, 2 BACK POCKETS WITH FLAPS

SIZES					
WAIST	28	30	31	32	33
INSEAM					
30	•	•	•	•	•
32	•	•	•	•	•



Bibs/Aprons/Coveralls

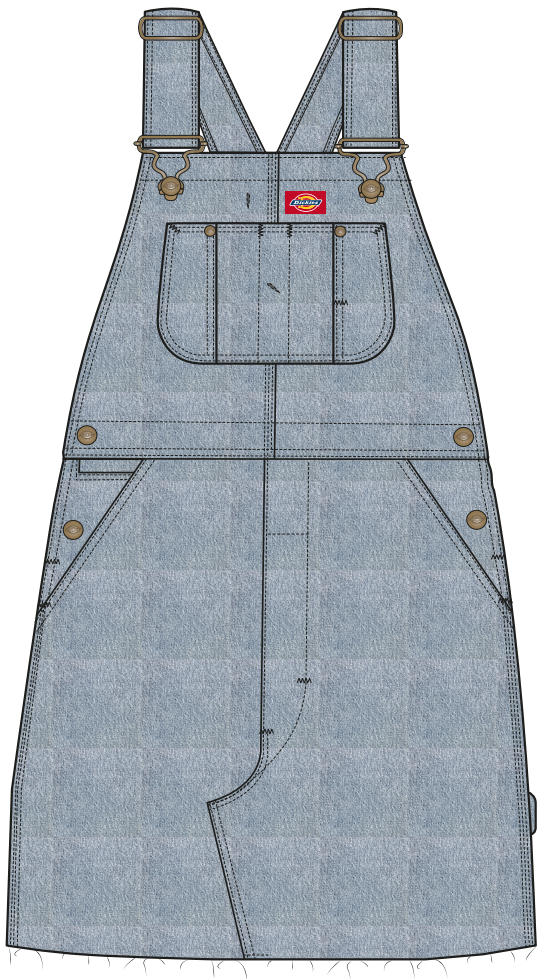
By Williamson-Dickie



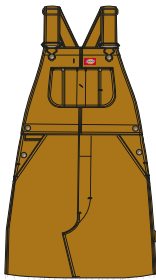
HOPEWELL

ARTICLE NO. 10000004W

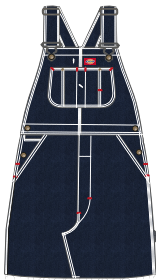
Start ship date: 15/12/18



LBL | LIGHT BLEACH



RBD | BROWN DUCK



RNB | INDIGO BLUE

LOOSE FIT BIB DRESS

RBD: 100% COTTON 12oz HIGH PERFORMANCE DUCK

RNB: 100% COTTON 11.75oz FINE WEAVE DENIM

RBD: TRIPLE STITCHED SEAMS, LARGE BIB POCKET

DOUBLE TOOL POCKET, HAMMER LOOP

RNB: GARMENT WASHED, TRIPLE STITCHED SEAMS, LARGE BIB POCKET

DOUBLE TOOL POCKET, HAMMER LOOP

SIZES

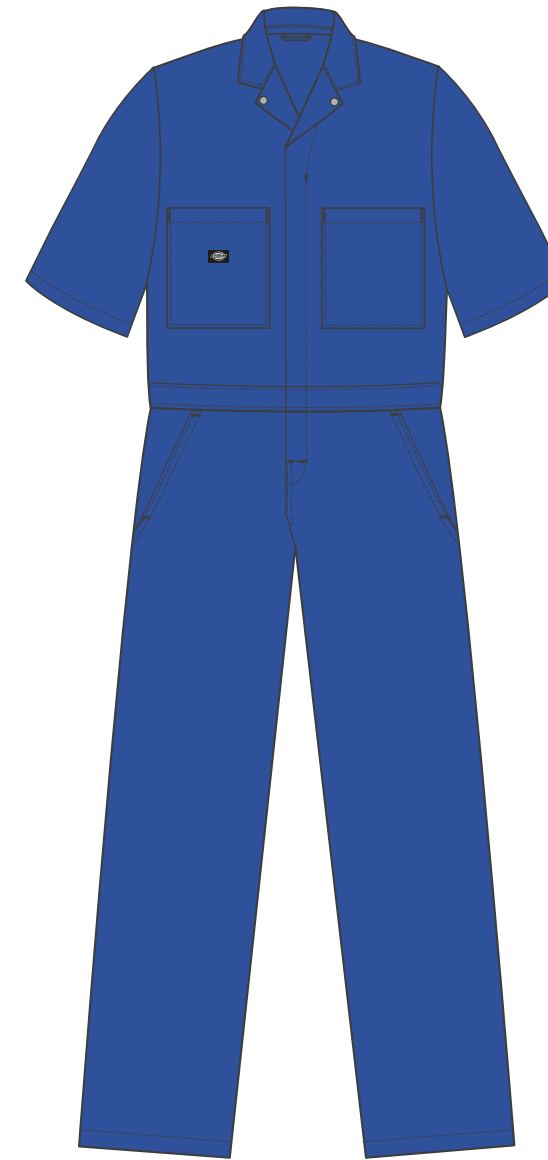
WAIST	28R	30R	31R	32R	34R



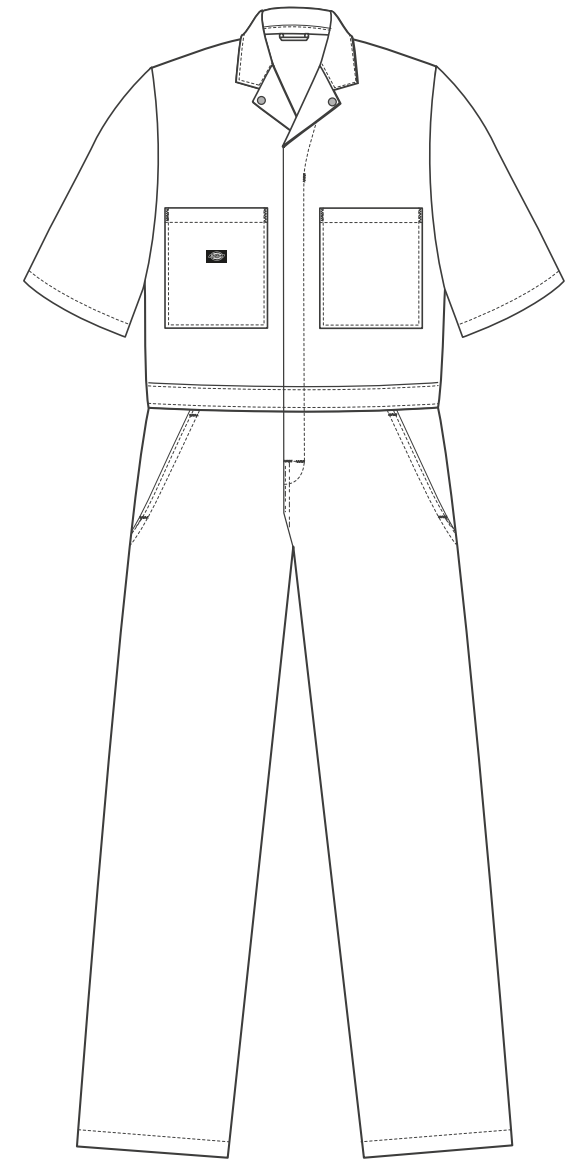
REGO PARK

ARTICLE NO. 01310025W

Start ship date: 15/01/19



BLL | ROYAL BLUE



WH | WHITE

WOMEN'S REGULAR FIT COVERALL
65% POLYESTER, 35% COTTON, 195GSM
SHORT SLEEVED COVERALL, STUD FASTENED COLLAR,
ZIP FASTENING, TWO HIP POCKETS

SIZES: XS, S, M, L



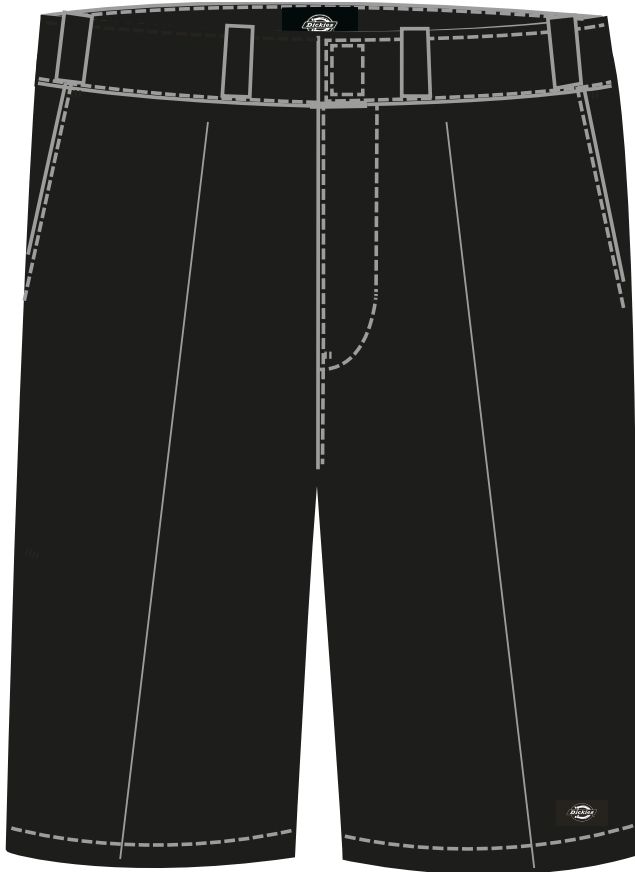
Shorts

By Williamson-Dickie

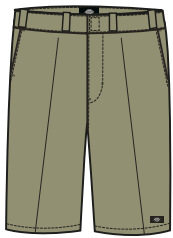


13” MULTI-POCKET WORK SHORT

ARTICLE NO. 42283W
Start ship date: 15/12/18



BK | BLACK



KH | KHAKI

13" LOOSE FIT REGULAR WAIST WORK SHORT
65% POLYESTER, 35% COTTON 8.5oz
STAIN RELEASE, DISTINCTIVE TUNNEL BELT LOOPS PERMANENT
CREASE, LOGO LABEL ON LEFT LEG AND MULTI USE SIDE POCKET

SIZES						
WAIST	28	30	31	32	33	34
BK	•	•	•	•	•	•
KH	•	•	•	•	•	•

11” SLIM STRAIGHT WORK SHORT

ARTICLE NO. WE42273W
Start ship date: 15/12/18



BK | BLACK

11” SLIM STRAIGHT WORK SHORT
65% POLYESTER, 35% COTTON 8.5oz TWILL
WRINKLE RESISTANT, STAIN RELEASE

SIZES							
WAIST	28	29	30	31	32	33	34



Sweats

By Williamson-Dickie



HARRISON

ARTICLE NO. 02200072W

Start ship date: 15/12/18



GYM | GRAY MELANGE



BK | BLACK



WH | WHITE

REGULAR FIT SWEATSHIRT
100% COTTON LOOPBACK, 360GSM IN PLAIN COLORS
85% COTTON, 15% POLYESTER LOOPBACK, 360GSM FOR MARL COLORS
CHEST PRINT

SIZES: XXS, XS, S, M, L, XL



SEABROOK

ARTICLE NO. 02200203W

Start ship date: BK 15/12/18 | BLL, FLA 15/01/19



FLA | FLAMINGO



BK | BLACK

REGULAR FIT SWEATSHIRT
86% COTTON, 14% POLYESTER LOOPBACK, 400GSM
SMALL CHEST PRINT

SIZES: XXS, XS, S, M, L, XL



Hoodies

By Williamson-Dickie

NEVADA

ARTICLE NO. 03200062W

Start ship date: UC, FLA 15/01/19, Other colors 15/12/18



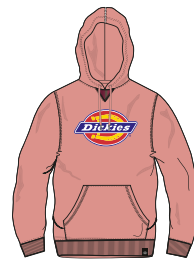
WH | WHITE



GYM | GRAY MELANGE



BK | BLACK



FLA | FLAMINGO

REGULAR FIT HOODY

100% COTTON LOOPBACK, 360GSM IN PLAIN COLORS
85% COTTON, 15% POLYESTER LOOPBACK, 360GSM FOR MARL COLORS
CHEST PRINT

SIZES: XXS, XS, S, M, L, XL





Shirts

By Williamson-Dickie

WEVERTOWN

ARTICLE NO. 05200341W

Start ship date: 15/01/19



FLA | FLAMINGO

REGULAR FIT BOWLING SHIRT
100% VISCOSE
SMALL CHEST PRINT, LARGE BACK PRINT WITH EMBROIDERED DETAIL, SOFTNER WASH

SIZES: XXS, XS, S, M, L, XL





SACRAMENTO

ARTICLE NO. 05200142W
Start ship date: 15/12/18



RD | RED



BK | BLACK

RELAXED FIT LONG SLEEVE SHIRT
100% COTTON TWILL FLANNEL
YARN DYED CHECK, BRUSHED AND GARMENT WASHED

SIZES: XXS, XS, S, M, L, XL



T-Shirts

By Williamson-Dickie



HORSESHOE TEE

ARTICLE NO. 0600075W
Start ship date: 15/12/18



GYM | GRAY MELANGE



WH | WHITE



BK | BLACK



FR | FIERY RED

REGULAR FIT T-SHIRT
100% COTTON LOOPBACK, 180GSM IN PLAIN COLORS
85% COTTON, 15% POLYESTER LOOPBACK, 180GSM FOR MARL COLORS
CHEST PRINT

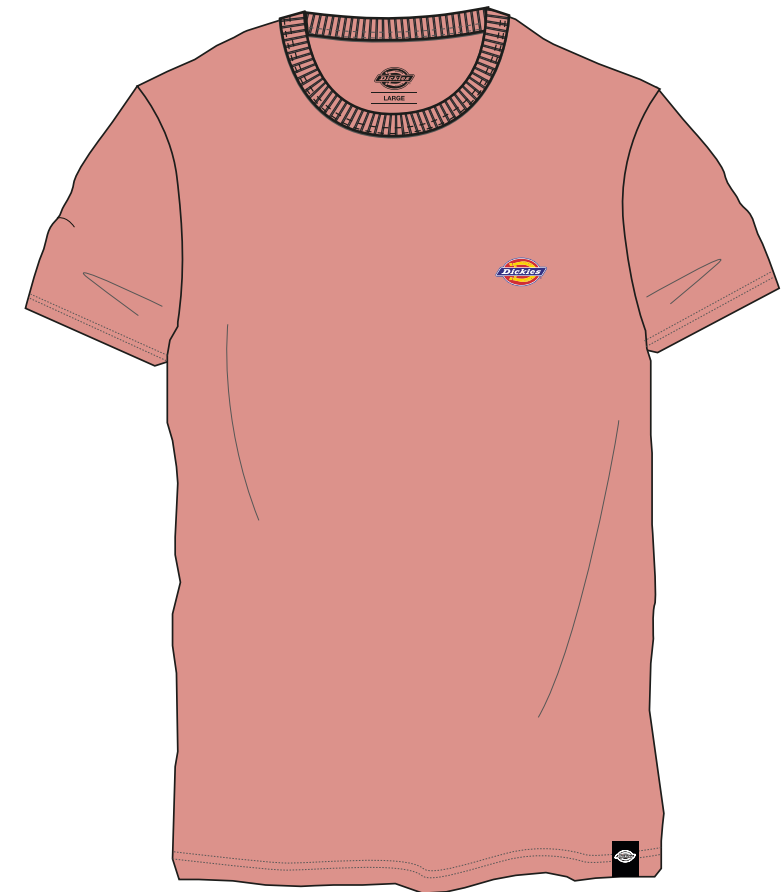
SIZES: XXS, XS, S, M, L, XL



STOCKDALE

ARTICLE NO. 06210578W

Start ship date: WH, BK 15/12/18 | CUS, FLA 15/01/19



FLA | FLAMINGO



CUS | CUSTARD



WH | WHITE



BK | BLACK

REGULAR FIT T-SHIRT
100% COTTON, 180GSM
SMALL CHEST PRINT

SIZES: XXS, XS, S, M, L, XL

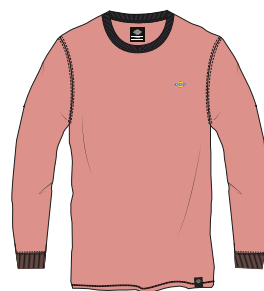
ROUND ROCK

ARTICLE NO. 06210593W

Start ship date: BK 15/12/18 | FLA 15/01/19



BK | BLACK



FLA | FLAMINGO

SLIM FIT LONG SLEEVE T-SHIRT
100% COTTON, 180GSM
SMALL CHEST PRINT

SIZES: XXS, XS, S, M, L, XL



PHILOMONT

ARTICLE NO. 06210607W
Start ship date: 15/01/19



DN | DARK NAVY



WH | WHITE

REGULAR FIT T-SHIRT
100% COTTON, 180GSM
CHEST PRINT, STONE WASH

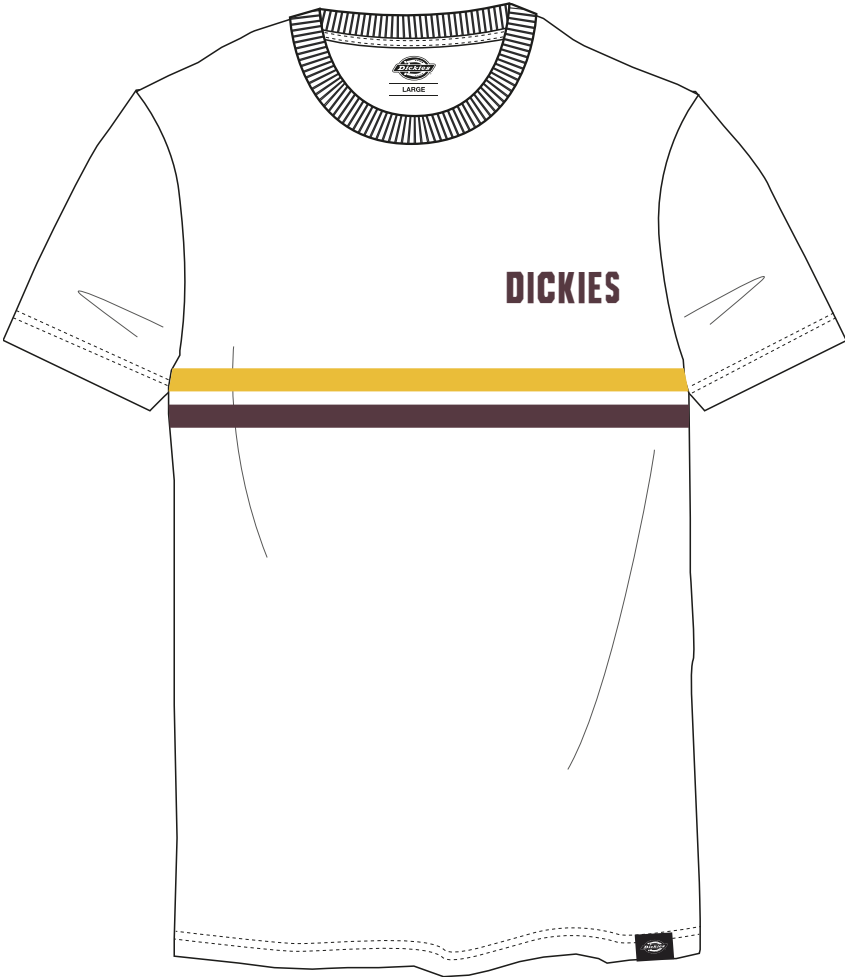
SIZES: XXS, XS, S, M, L, XL



KNOXBORO

ARTICLE NO. 06210623W

Start ship date: 15/01/19



WH | WHITE

REGULAR FIT T-SHIRT
100% COTTON, 175GSM IN PLAIN COLORS
90% COTTON, 10% POLYESTER, 175GSM FOR GRAY MELANGE
CHEST PRINT, HEAVY GARMENT WASH

SIZES: XXS, XS, S, M, L, XL



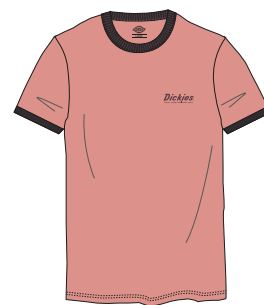
BARKSDALE

ARTICLE NO. 06210543W

Start ship date: 15/01/19



WH | WHITE



FLA | FLAMINGO

REGULAR FIT T-SHIRT
100% COTTON, 180GSM
SMALL CHEST PRINT, STONE WASH

SIZES: XXS, XS, S, M, L, XL





DICKIES BASEBALL

ARTICLE NO. 06210275
Start ship date: BK, DKO 15/12/18 | BLL 15/01/19



BLL | ROYAL BLUE



DKO | DARK OLIVE



BK | BLACK

REGULAR FIT LONG SLEEVE RAGLAN T-SHIRT
100% COTTON, 180GSM
CONTRAST RAGLAN SLEEVE DETAILING, SMALL CHEST PRINT

SIZES: XXS, XS, S, M, L, XL

NEW PALT'Z

ARTICLE NO. 06210628W
Start ship date: 15/02/19



HEA | HEATH



NV | NAVY

REGULAR FIT T-SHIRT
100% COTTON, 220GSM
YARN DYED STRIPE

SIZES: XXS, XS, S, M, L, XL





Jackets

By Williamson-Dickie

PENNELVILLE

ARTICLE NO. 07200334W
Start ship date: 15/01/19



FR | FIERY RED

LOOSE FIT OVER THE HEAD WINDBREAKER
OUTER: 100% POLYAMIDE 250T TASLON 90GSM LINING: 100% POLYESTER
MESH SLEEVE & POCKET LINING: 100% POLYESTER 210T 50GSM
APPLIQUE DETAIL, EMBROIDERED BADGE AT CHEST, 2 WELTED HIP
POCKETS, INNER DRAW CORD, HEM ADJUSTERS

SIZES: XXS, XS, S, M, L, XL



REXVILLE

ARTICLE NO. 07200333W

Start ship date: 15/01/19



BLL | ROYAL BLUE

OVER THE HEAD JACKET
OUTER: 100% POLYAMIDE, PU COATING
LINING: 100% POLYESTER 1000MM WATERPROOF, TAPED SEAMS,
DOUBLE ENTRY PATCH POCKET AT FRONT, ELASTICATED SLEEVE CUFF AND HEM

SIZES: XXS, XS, S, M, L, XL





Accessories

By Williamson-Dickie

HIGH ISLAND

ARTICLE NO. 08-430014
Start ship date: BD, NV 15/01/19, Other colors 15/12/18



CF | CAMOUFLAGE



BK | BLACK



NV | NAVY



BD | BROWN DUCK

BUM BAG
100% POLYESTER 600DX600D
LINING 100% POLYESTER
SLIP POCKET ON REVERSE, ADJUSTABLE WAIST STRAP
13 X 29 X 10 CM
CAPACITY 1.9L

MARTINSVILLE

ARTICLE NO. 08-430001
Start ship date: 15/12/18



CF | CAMOUFLAGE



BK | BLACK

BUM BAG
100% POLYESTER 600DX600D
LINING 100% POLYESTER
ZIPPED COMPARTMENT WITH STORM FLAP
ZIP POCKET ON REVERSE, ADJUSTABLE WAIST STRAP
15 X 35 X 10 CM
CAPACITY 5L

ARKVILLE

ARTICLE NO. 08-410357
Start ship date: 15/12/18



BD | BROWN DUCK



CH | CHARCOAL



BK | BLACK



FR | FIERY RED



UC | SCOUT

BACK PACK
100% POLYESTER 600DX600D
MAIN ZIP COMPARTMENT, FRONT POCKET WITH STORM FLAP
EMBROIDERED LOGO DETAIL
42 X 30 X 13CM CAPACITY 16L

GILMER

ARTICLE NO. 08-430015
Start ship date: 15/12/18



UC | SCOUT



BK | BLACK

NV | NAVY

BD | BROWN DUCK

FR | FIERY RED

CF | CAMOUFLAGE

CROSS BODY BAG
100% POLYESTER 600DX600D
LINING 100% POLYESTER
ADJUSTABLE STRAP, 3 ZIPPED COMPARTMENTS
INTERNAL ZIP POCKET, REVERSE ZIPS
21 X 19 X 5 CM
CAPACITY 2L

HAYWOOD

ARTICLE NO. 08-430016
Start ship date: 15/12/18



RIN | RINSED



BK | BLACK

UC | SCOUT

MR | MAROON

DIJ | DIJON

BD | BROWN DUCK

LADIES BACKPACK
RIN: 100% 14oz DENIM 600DX600D
OTHER COLORS: 100% POLYESTER 600DX600D
LINING 100% POLYESTER, METAL FRAME CONSTRUCTION, ZIPPED MAIN COMPARTMENT WITH 2 INTERIOR COMPARTMENTS,
2 FRONT ZIP POCKETS, ZIPPED POCKET ON REVERSE, WEBBING HANDLES, PADDED STRAPS
35 X 23 X 12 CM CAPACITY 9.7L

WOODLAKE

ARTICLE NO. 08-430012
Start ship date: 15/12/18



BK | BLACK



MR | MAROON



OG | OLIVE GREEN

CHEST PACK
100% NYLON
LINING 100% POLYESTER
ROLL TOP DETAIL WITH SIDE SQUEEZE BUCKLE
ZIP ACCESS ON REVERSE, ADJUSTABLE MONO STRAP
35 X 15 X 13 CM
CAPACITY 7L

FORT SPRING

ARTICLE NO. 08-430019
Start ship date: 15/12/18



UC | SCOUT



OG | OLIVE GREEN



BK | BLACK



CUS | CUSTARD



DKH | DARK KHAKI



NV | NAVY

UTILITY WAISTPACK
100% POLYESTER RIPSTOP
LINING 100% POLYESTER
REVERSE ZIP MAIN POCKET
2 FRONT ZIP POCKETS, SIDE PANEL POCKET, PLASTIC KEY CLIP
3 CARD SLOTS, 2 SLIP POCKETS TO INTERIOR
ELASTIC CORD ZIP PULLERS WITH HEAT AND SHRINK TUBING
SLIP POCKET ON REVERSE, ADJUSTABLE WAIST STRAP
15.5 X 26 X 7 CM
CAPACITY 2.8L

MALVERN

ARTICLE NO. 08-410356
Start ship date: 15/01/19



BLL | ROYAL BLUE



BK | BLACK



WH | WHITE

CANVAS TOTE BAG
100% COTTON CANVAS, 10oz
INTERNAL POCKET, PRINT DETAIL TO FRONT
WOVEN TAB LABEL IN SIDE SEAM
44.5 X 43 X 13CM
CAPACITY: 25L

MULDOON

ARTICLE NO. 08-440031

Start ship date: FR 15/01/19 | Other colors 15/12/18



FR | FIERY RED



BK | BLACK



GYM | GRAY MELANGE



MR | MAROON



BD | BROWN DUCK



CF | CAMOUFLAGE

5 PANEL SNAPBACK CAP
100% COTTON TWILL SOLID COLORS
85% ACRYLIC, 15% WOOL GYM
EMBROIDERED BADGE DETAIL
EMBROIDERED EYELET DETAILS
PLASTIC SNAP ADJUSTER

ONE SIZE

WILLOW CITY

ARTICLE NO. 08-440036

Start ship date: FR 15/01/19 | Other colors 15/12/18



BD | BROWN DUCK



DKH | DARK KHAKI



BK | BLACK



GYM | GRAY MELANGE



MR | MAROON



NV | NAVY



FR | FIERY RED



WH | WHITE



DKO | DARK OLIVE

6 PANEL UNSTRUCTURED CAP
100% WASHED CHINO COTTON SOLID COLORS
85% ACRYLIC, 15% WOOL GYM
EMBROIDERED LOGO DETAIL, EMBROIDERED EYELET DETAILS
HOOK-AND-LOOP ADJUSTER

ONE SIZE

TONAWANDA

ARTICLE NO. 08-440079

Start ship date: 15/01/19



NV | NAVY



BK | BLACK



RIN | RINSED



WH | WHITE

5 PANEL UNSTRUCTURED CAP

100% COTTON

EMBROIDERY DETAIL TO CENTRE FRONT, EMBROIDERED EYELET DETAILS
FABRIC ADJUSTER, EMBOSSSED BUCKLE AND TUCK IN FASTENING

ONE SIZE



CAIRO

ARTICLE NO. 08-440062
Start ship date: 15/02/19



KH | KHAKE



BK | BLACK



MR | MAROON

5 PANEL SNAPBACK CAP
100% POLYESTER
EMBOSSED BRANDING
PLASTIC SNAP ADJUSTER

ONE SIZE

BRADFORD

ARTICLE NO. 08-440076
Start ship date: 15/01/19



UC | SCOUT



BK | BLACK



BD | BROWN DUCK



FR | FIERY RED

5 PANEL SNAPBACK CAP
CROWN 100% COTTON, MESH 100% POLYESTER
BADGE DETAIL TO CENTRE FRONT
EMBROIDERED EYELET DETAILS
PLASTIC SNAP ADJUSTER

ONE SIZE



MANHASSET

ARTICLE NO. 08-440070
Start ship date: 15/02/19



BK | BLACK



CF | CAMOUFLAGE

BOONIE HAT
100% COTTON RIPSTOP
WOVEN TAB LABEL APPLIED TO LEFT SEAM
CORD ADJUSTER WITH PU TOGGLE

ONE SIZE

FREEVILLE

ARTICLE NO. 08-440068
Start ship date: 15/01/19



NV | NAVY



UC | SCOUT



WH | WHITE

BUCKET HAT
100% NYLON
WOVEN LABEL, EMBROIDERED EYELET DETAILS
ELASTIC TOGGLE ADJUSTER AT REAR

ONE SIZE

JACKSONPORT

ARTICLE NO. 08-410340
Start ship date: 15/12/18



BK | BLACK

FLAT CAP
97% POLYESTER, 3% SPANDEX
LINING 100% POLYESTER SATIN
BADGE DETAIL APPLIED TO LINING

ONE SIZE

TUCSON

ARTICLE NO. 08-410164
Start ship date: 15/12/18



BK | BLACK



BR | BROWN



GR | GREEN

FLAT CAP
90% POLYESTER, 10% WOOL TWEED
LINING 100% POLYESTER SATIN
BADGE DETAIL APPLIED TO LINING

ONE SIZE

ALASKA

ARTICLE NO. 08-410153
Start ship date: CUS, FR 15/01/19 | Other colors 15/12/18



CUS | CUSTARD



BK | BLACK



DB | DARK BROWN



OG | OLIVE GREEN



DN | DARK NAVY



BD | BROWN DUCK



MR | MAROON



GYM | GRAY MELANGE



NV | NAVY



FR | FIERY RED



DGM | DARK GRAY MELANGE

BEANIE HAT
100% ACRYLIC
DOUBLE LAYER KNIT WITH TURN UP
WOVEN LABEL DETAIL

ONE SIZE

FONDA

ARTICLE NO. 08-440063

Start ship date: 15/01/19



GYM | GRAY MELANGE



BK | BLACK



BLL | ROYAL BLUE



FR | FIERY RED



KH | KHAKI



OG | OLIVE GREEN

BEANIE HAT
100% ACRYLIC
WOVEN LABEL DETAIL
DOUBLE LAYER KNIT WITH TURN UP
SHALLOW FIT

ONE SIZE

COLFAX

ARTICLE NO. 08-440059

Start ship date: FLA, BLL 15/01/19 | Other colors 15/12/18



FLA | FLAMINGO



BK | BLACK



BLL | ROYAL BLUE



OG | OLIVE GREEN



BD | BROWN DUCK



DGM | DARK GRAY MELANGE



MR | MAROON

BEANIE HAT
100% ACRYLIC
DOUBLE LAYER KNIT WITH TURN UP
EMBROIDERED LOGO DETAIL

ONE SIZE

ORCUTT

ARTICLE NO. 08-410190
Start ship date: 15/12/18



BD | BROWN DUCK



BK | BLACK



MR | MAROON



DN | DARK NAVY



CH | CHARCOAL



CF | CAMOUFLAGE



WH | WHITE

BELT
100% POLYESTER WEBBING

SIZE: 120CM

SCOTTSVILLE

ARTICLE NO. 08-470004
Start ship date: 15/12/18



RDB | RED/BLACK



PGB | PINE GREEN/BLACK

BELT
100% POLYESTER WEBBING

SIZE: 120CM

WEBSTER

ARTICLE NO. 08-470003
Start ship date: 15/12/18



KH | KHAKI



BK | BLACK

BELT
65% POLYESTER, 35% COTTON, 8.5oz TWILL
MADE FROM THE ICONIC 874 FABRIC
EMBOSSED LOGO
BOTTLE OPENER DETAIL IN BUCKLE

SIZE: 120CM

ATLANTIC CITY

ARTICLE NO. 08-410196
Start ship date: 15/12/18



RB | ROYAL BLUE



BU | BLUE



BK | BLACK

SOCKS
75% COTTON, 13% POLYESTER, 10% ELASTODIENE, 2% ELASTANE
PACK CONTAINS 3 PAIRS OF SOCKS OF THE SAME COLOR

SIZES: 35 - 38 (UK 3 - 5) 39 - 42 (UK 6 - 9), 43 - 46 (UK 9 - 11)
BK NOT AVAILABLE

KIRKVILL

ARTICLE NO. 08-490011
Start ship date: 15/01/19



MR | MAROON



UC | SCOUT

SOCKS
75% COTTON, 13% POLYESTER, 10% ELASTODIENE, 2% ELASTANE
PACK CONTAINS 3 PAIRS OF THE SAME COLOR

SIZES: 35 - 38 (UK 3 - 5) 39 - 42 (UK 6 - 9) 43 - 46 (UK 9 - 11)

NEW BOSTON

ARTICLE NO. 08-490006
Start ship date: 15/12/18



AS | ASSORTED



BLACK



NAVY



OLIVE GREEN

SOCKS
74% COTTON, 15% POLYAMIDE, 9% ELASTODIENE, 2% ELASTANE
PACK CONTAINS 3 PAIRS OF SOCKS IN ASSORTED COLORS

SIZES: 39 - 42 (UK 6 - 9) 43 - 46 (UK 9 - 11)

MADISON HEIGHTS

ARTICLE NO. 08-490005

Start ship date: AS 15/12/18 | AS2 15/01/19



AS | ASSORTED



BLACK / BLUE



ORANGE / PINK



NAVY / YELLOW



AS2 | ASSORTED 2



SCOUT / FLAMINGO



BLACK / OCEAN



ROYAL BLUE / CUSTARD

SOCKS

71% COTTON, 20% POLYESTER, 7% ELASTODIENE, 2% ELASTANE
PACK CONTAINS 3 PAIRS OF SOCKS IN ASSORTED COLORS

SIZES: 35 - 38 (UK 3 - 5) 39 - 42 (UK 6 - 9) 43 - 46 (UK 9 - 11)

NEWCOMB

ARTICLE NO. 08-490010

Start ship date: 15/01/19



AS | ASSORTED



FIERY RED



BLACK



BROWN DUCK

SOCKS

71% COTTON, 20% POLYESTER, 7% ELASTODIENE, 2% ELASTANE
PACK CONTAINS 3 PAIRS OF SOCKS IN ASSORTED COLORS

SIZES: 35 - 38 (UK 3 - 5) 39 - 42 (UK 6 - 9) 43 - 46 (UK 9 - 11)

VALLEY GROVE

ARTICLE NO. 08-490009

Start ship date: 15/12/18



AS | ASSORTED



WHITE



BLACK



GRAY MELANGE

SOCKS

79% COTTON, 16% POLYESTER, 5% ELASTANE
EMBROIDERED LOGO
PACK CONTAINS 3 PAIRS OF SOCKS IN ASSORTED COLORS

SIZES: 35 - 38 (UK 3 - 5) 39 - 42 (UK 6 - 9), 43 - 46 (UK 9 - 11)

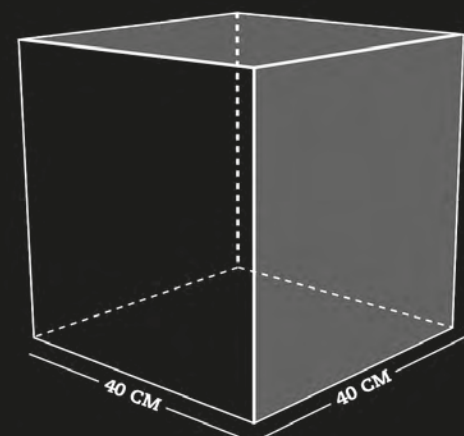


WOODBBOX

ENDLESS POSSIBILITIES

CREATE THE PERFECT DICKIES CORNER

Dickies wooden box fits perfectly into every store and can also be hung on the wall



The box measures 40x40x40cm.

With four assembly holes on each side for mounting on the wall with the screws provided or for attaching boxes together.



WOODBBOX
NEW INSTORE POS

WOODEN DISPLAY TRAY



The wooden display tray is designed to attach to the existing Dickies Woodbox system to display smaller items, accessories etc. With two removable dividers this tray is truly flexible and able to display a multitude of different sized product.

With the Dickies Woodbox system you are only limited by your imagination!



WOODBBOX



P.O.S.

A3 Logo Board/Stand



Product No. 08 420072
Size 42 x 29.7cm

Promo Board/ Stand Fit Guide



Product No. 08 420156
Size 30 x 30cm

Promo Board/ Stand SS19 Skate



Product No. 08 420180
Size 30 x 30cm

Foam Logo



Product No. 08 420178
Size 38.5 x 22.5 x 10cm

Lightbox Display Unit



Product No. 08 420129
Size 60 x 35 x 7cm

Window Sticker



Product No. 08 420097
Size 21 x 14.8cm

Same Brand A1 Poster



Product No. 08 420165
Size 594 x 841 mm

Paper Bag Pack of 25



Small: 320w x 400H x 130d
Product No. 08 420001
Large: 600w x 580H x 150d
Product No. 08 420111

Tote Bag



Product No. 08 420179
Size 44.5 x 43 x 13cm

PVC Outdoor Banner



Product No. 08 420083
Size 200 x 150cm

Doormat



Standard Size: 58 x 85 cm Product No. 08 420109
Large Size: 78 x 150 cm Product No. 08 420108

Color Sticker



A3 (Pack of 5) 08 420085 (29.7 x 42cm)
A5 (Pack of 25) 08 420066 (14.8 x 21cm)
A6 (Pack of 25) 08 420067 (10.5 x 14.8cm)

Black Sticker



A5 (Pack of 25) 08 420068 (14.8 x 21cm)
A6 (Pack of 25) 08 420069 (10.5 x 14.8cm)

USB



Product No. 08 420070

Hangers



Product No. 08 420065

Wooden Display Box



Product No. 08 420140
Size 40 x 40 x 40cm

Wooden Display Tray



Product No. 08 420155
Size 9 x 40 x 40 cm

Enamel Camping Mug



Product No. 08 420159
Height 75mm
Capacity 11,8 oz

Trouser Hanger



Product No. 08 420077

Pen



Product No. 08 420096

Key Rings



Product No. 08 420166