



**WOMENSWEAR RANGE  
SPRING/SUMMER 2018**





# Pants

---

By Williamson-Dickie



# ORIGINAL 874® WORK PANT

ARTICLE NO. 874W



KH | KHAKI



CH | CHARCOAL

BK | BLACK

WH | WHITE

DN | DARK NAVY

**ORIGINAL FIT, STRAIGHT LEG WORK PANT**

65% POLYESTER, 35% COTTON 8.5oz TWILL  
SITS AT WAIST, WRINKLE RESISTANT, STAIN RELEASE

**SIZES**

WAIST	26S	28S	29S	29R	30S	30R	30T	31R	32S	32R	32T	33R	33T	34S	34R	34T
BK		•	•	•	•	•	•	•	•	•	•	•	•	•	•	•
KH	•	•	•	•	•	•	•	•	•	•	•	•	•	•	•	•
CH		•	•	•	•	•	•	•	•	•	•	•	•	•	•	•
DN		•	•	•	•	•	•	•	•	•	•	•	•	•	•	•
WH		•	•	•	•	•	•	•	•	•	•	•	•	•	•	•



# SLIM STRAIGHT WORK PANT

ARTICLE NO. WP873W



CH | CHARCOAL



BK | BLACK

KH | KHAKI

EOR | ENERGY  
ORANGE

YLD | DUSK  
YELLOW

**SLIM FIT, STRAIGHT LEG WORK PANT**  
65% POLYESTER, 35% COTTON 8.5oz TWILL  
SITS BELOW THE WAIST, LOWER RISE,  
WRINKLE RESISTANT, STAIN RELEASE

SIZES

WAIST	28S	29S	30S	30R	31R	32S	32R	32T	33R	34R	34T
BK	•	•	•	•	•	•	•	•	•	•	•
KH	•	•	•	•	•	•	•	•	•	•	•
CH	•	•	•	•	•	•	•	•	•	•	•
EOR	•	•	•	•	•	•	•	•	•	•	•
YLD	•	•	•	•	•	•	•	•	•	•	•

# FLEX WORK PANT

ARTICLE NO. WP596W



BK | BLACK



DS | DESERT SAND VG | GRAVEL GRAY

**SLIM FIT TAPERED CROPPED LEG WORK PANT**  
 65% POLYESTER, 35% COTTON, 7.3oz MECHANICAL STRETCH TWILL  
 SITS BELOW THE WAIST, RESISTS WRINKLES, EASY CARE STAIN RELEASE,  
 MOISTURE WICKING, MULTI USE CELL PHONE POCKET

SIZES

WAIST	28	30	31	32	33	34
INSEAM						
26	•	•	•	•	•	•
28	•	•	•	•	•	•

# EDWARDSPORT

ARTICLE NO. 01-210121W



WHC | WHITE CAMO



BK | BLACK CF | CAMOUFLAGE

**SLIM FIT COMBAT PANT**  
 100% COTTON RIPSTOP, 250GSM  
 ENZYME AND SILICON WASH, 2 CARGO POCKETS, 2 BACK POCKETS WITH FLAPS

SIZES

WAIST	28	30	31	32	33	34
INSEAM						
30	•	•	•	•	•	•
32	•	•	•	•	•	•
34			•	•	•	•





# Bibs/Aprons/Coveralls

---

By Williamson-Dickie



# FARWELL

ARTICLE NO. 08410352W



BK | BLACK



KH | KHAKI

HALF APRON  
65% POLYESTER 35% COTTON 8.5oz TWILL  
STAIN RELEASE, WRINKLE RESISTANT

# HEADLEY

ARTICLE NO. 08410353W



BK | BLACK



KH | KHAKI

TRADITIONAL APRON  
65% POLYESTER 35% COTTON 8.5oz TWILL  
STAIN RELEASE, WRINKLE RESISTANT



# PURDON

ARTICLE NO. 01210136W



WH | WHITE



WHC | WHITE CAMO BK | BLACK

REGULAR FIT BIB OVERALL  
 100% COTTON RIPSTOP, 250GSM  
 ENZYME AND SILICON WASHED, TRIPLE STITCHED SEAMS,  
 LARGE BIB POCKET, DOUBLE TOOL POCKET, HAMMER LOOP

### SIZES

WAIST	28	30	32	34
INSEAM				
30	•	•	•	•
32	•	•	•	•
34				•

# QUINLAN

ARTICLE NO. 01210138W



KH | KHAKI



NV | NAVY



SHORT SLEEVED COTTON COVERALL  
100% COTTON, 170GSM  
LIGHTWEIGHT FABRIC, STUD FASTENED COLLAR, CONCEALED TWO  
WAY ZIP, ELASTICATED WAISTBAND

SIZES: S, M, L, XL





# Shorts

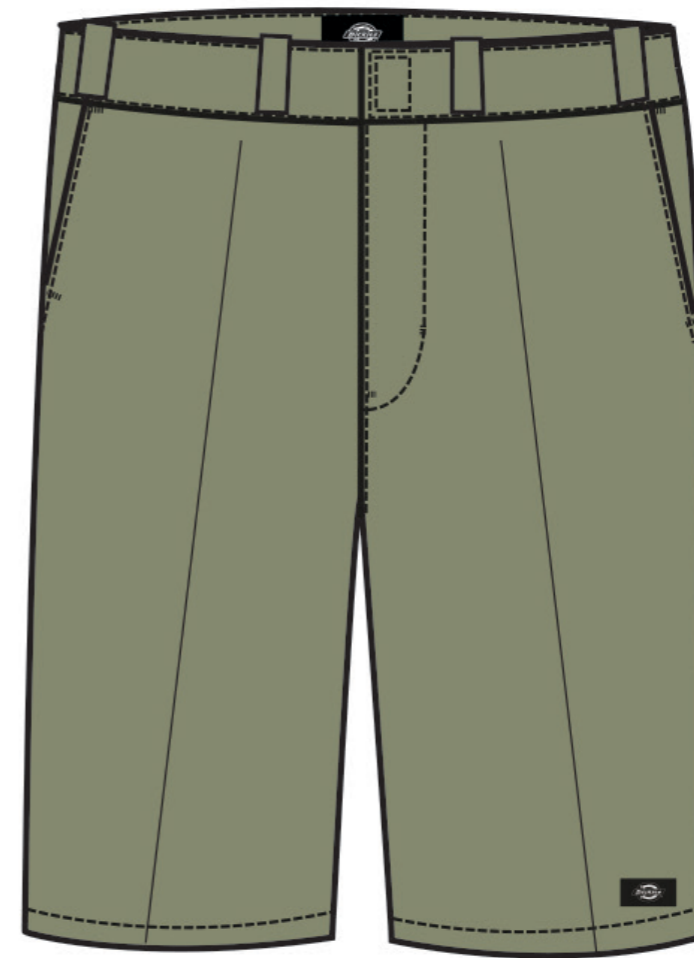
---

By Williamson-Dickie



# 13" MULTI-POCKET WORK SHORT

ARTICLE NO. 42283W



**KH** | KHAKI



**BK** | BLACK

13" LOOSE FIT REGULAR WAIST WORK SHORT  
 65% POLYESTER, 35% COTTON 8.5oz  
 STAIN RELEASE, DISTINCTIVE TUNNEL BELT LOOPS PERMANENT  
 CREASE, LOGO LABEL ON LEFT LEG AND MULTI USE SIDE POCKET

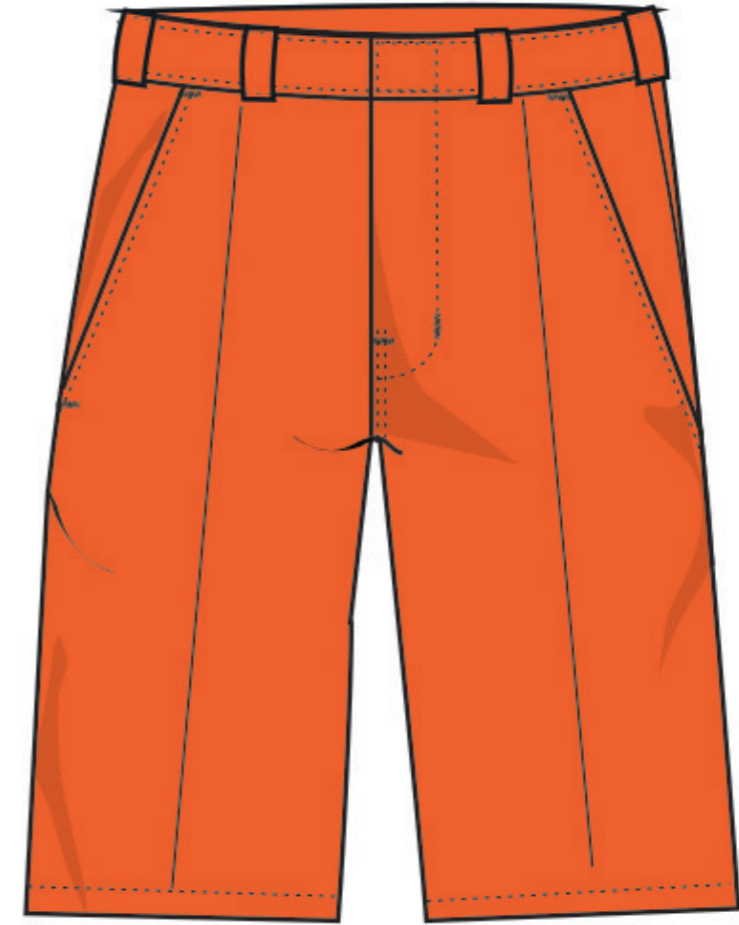
### SIZES

WAIST	28	30	31	32	33	34
BK	•	•	•	•	•	•
KH	•	•	•	•	•	•



# 11" SLIM STRAIGHT WORK SHORT

ARTICLE NO. WE42273W



EOR | ENERGY ORANGE



BK | BLACK



CH | CHARCOAL



KH | KHAKI



YLD  
DUSK YELLOW



WH | WHITE

11" SLIM STRAIGHT WORK SHORT  
65% POLYESTER, 35% COTTON 8.5oz TWILL  
WRINKLE RESISTANT, STAIN RELEASE

## SIZES

WAIST	28	29	30	31	32	33	34
	•	•	•	•	•	•	•



# Sweats

---

By Williamson-Dickie

# HARRISON

ARTICLE NO. 02200072W



WH | WHITE



ROP | ROSE PINK



BSK | BLUE SKY



YLD | DUSK YELLOW



BK | BLACK



EOR | ENERGY ORANGE



DKO | DARK OLIVE



MR | MAROON



BD | BROWN DUCK



GYM | GRAY MELANGE



NV | NAVY

REGULAR FIT SWEATSHIRT  
100% COTTON, LOOP BACK 360GSM IN PLAIN COLORS,  
85% COTTON 15% POLYESTER LOOPBACK, 360GSM FOR MARL COLORS  
CHEST PRINT

SIZES: XXS, XS, S, M, L, XL

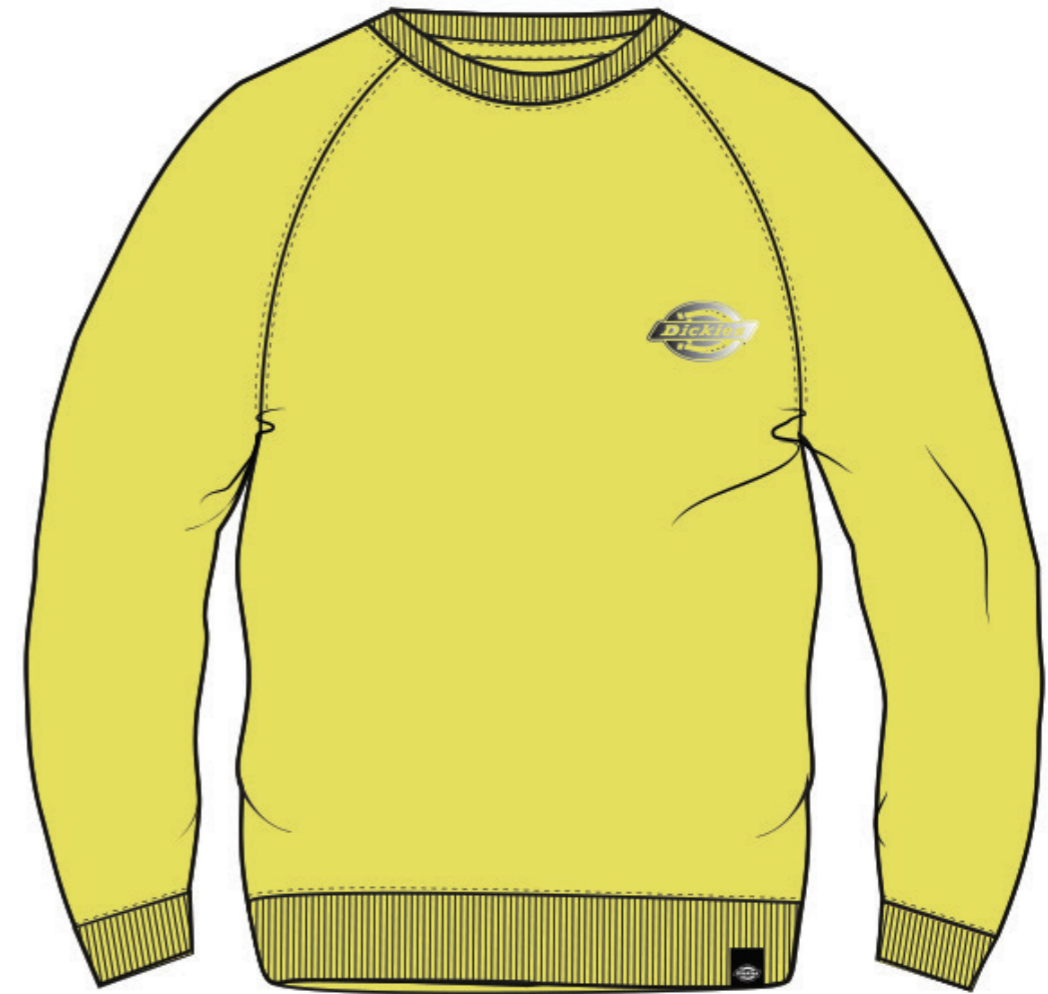






# BRIGGSVILLE

ARTICLE NO. 02200168W



YLD | DUSK YELLOW



ROP | ROSE PINK



BK | BLACK



EOR | ENERGY ORANGE

REGULAR FIT RAGLAN SWEATSHIRT  
100% COTTON LOOPBACK, 370GSM  
SMALL CHEST PRINT, STONE WASH

SIZES: XXS, XS, S, M, L, XL



# Hoodies

---

By Williamson-Dickie

# NEVADA

ARTICLE NO. 03200062W



WH | WHITE



BSK | BLUE SKY    YLD | DUSK YELLOW    EOR | ENERGY ORANGE    GYM | GRAY MELANGE    BK | BLACK



ROP | ROSE PINK    DKO | DARK OLIVE    NV | NAVY    BD | BROWN DUCK

REGULAR FIT HOODY  
 100% COTTON LOOPBACK, 360GSM IN PLAIN COLORS,  
 85% COTTON 15% POLYESTER LOOPBACK, 360GSM FOR MARL COLORS  
 CHEST PRINT

SIZES: XXS, XS, S, M, L, XL

# SANTO

ARTICLE NO. 03200156W



WH | WHITE



GYM | GRAY MELANGE    BK | BLACK

REGULAR FIT HOODY  
 100% COTTON LOOPBACK, 360GSM  
 LARGE CHEST PRINT

SIZES: XXS, XS, S, M, L, XL



# PROGRESO

ARTICLE NO. 03200155W



**EOR** | ENERGY ORANGE



**GYM** | GRAY MELANGE

REGULAR FIT HOODY  
100% COTTON LOOPBACK, 360GSM  
REFLECTIVE PRINT

SIZES: XXS, XS, S, M, L, XL



# THICKET

ARTICLE NO. 03200159W



ROP | ROSE PINK



BK | BLACK

REGULAR FIT HOODY  
100% COTTON LOOPBACK, 360GSM  
REFLECTIVE PRINT AT CHEST

SIZES: XXS, XS, S, M, L, XL





# Shirts

---

By Williamson-Dickie



# SACRAMENTO

ARTICLE NO. 05200142W



YL | YELLOW



RD | RED



BK | BLACK

RELAXED FIT LONG SLEEVE SHIRT  
100% COTTON TWILL FLANNEL YARN DYED CHECK  
BRUSHED AND GARMENT WASHED

SIZES: XXS, XS, S, M, L, XL





# KEMPTON

ARTICLE NO. 05200230W



WHC | WHITE CAMO



BK | BLACK



WH | WHITE

REGULAR FIT LONG SLEEVE SHIRT  
100% COTTON RIPSTOP, 250GSM  
ENZYME AND SILICON WASH

SIZES: XXS, XS, S, M, L, XL



## T-Shirts

---

By Williamson-Dickie



# HORSESHOE TEE

ARTICLE NO. 0600075W



WH | WHITE



MR | MAROON



BK | BLACK



EOR  
ENERGY ORANGE



GYM  
GRAY MELANGE



BSK | BLUE SKY



ROP | ROSE PINK



YLD | DUSK YELLOW



NV | NAVY



BD | BROWN DUCK



DKO | DARK OLIVE

REGULAR FIT T-SHIRT  
100% COTTON, 180GSM IN PLAIN COLORS  
85% COTTON, 15% POLYESTER FOR MARL COLORS  
CHEST PRINT

SIZES: XXS, XS, S, M, L, XL

# JOHNSON CITY

ARTICLE NO. 06210584W



WPK | WHITE PINK



WH | WHITE



BK | BLACK

REGULAR FIT T-SHIRT  
100% COTTON SINGLE JERSEY, 180GSM  
LARGE CHEST PRINT

SIZES: XXS, XS, S, M, L, XL



# WICKETT

ARTICLE NO. 06210594W



WH | WHITE



BK | BLACK

SLIM FIT VEST  
100% COTTON SINGLE JERSEY, 180GSM  
SMALL CHEST PRINT

SIZES: XXS, XS, S, M, L, XL





# STOCKDALE

ARTICLE NO. 06210578W



WH | WHITE



MR | MAROON



BK | BLACK



EOE  
ENERGY ORANGE



GYM  
GRAY MELANGE



BSK | BLUE SKY



ROP | ROSE PINK



YLD | DUSK YELLOW



NV | NAVY



BD | BROWN DUCK



DKO | DARK OLIVE

REGULAR FIT T-SHIRT  
100% COTTON SINGLE JERSEY, 180GSM  
SMALL CHEST PRINT

SIZES: XXS, XS, S, M, L, XL



# ROUND ROCK

ARTICLE NO. 06210593W



WH | WHITE



BK | BLACK

SLIM FIT LONG SLEEVE T-SHIRT  
100% COTTON SINGLE JERSEY, 180GSM  
SMALL CHEST PRINT

SIZES: XXS, XS, S, M, L, XL



# PIPERSVILLE

ARTICLE NO. 06210525W



ROP | ROSE PINK



EOR | ENERGY ORANGE



BK | BLACK



YLD | DUSK YELLOW

SLIM FIT LONG SLEEVE T-SHIRT  
100% COTTON SINGLE JERSEY, 180GSM  
SMALL CHEST PRINT, STONE WASH

SIZES: XXS, XS, S, M, L, XL



# AUSTWELL

ARTICLE NO. 06210573W



BACK PRINT

EOR | ENERGY ORANGE



WH | WHITE



BK | BLACK



REGULAR FIT T-SHIRT  
100% COTTON SINGLE JERSEY, 180GSM  
SMALL CHEST PRINT AND BACK PRINT, STONE WASH

SIZES: XXS, XS, S, M, L, XL



# BAGWELL

ARTICLE NO. 06210574W



ROP | ROSE PINK



WH | WHITE



BK | BLACK

REGULAR FIT T-SHIRT  
100% COTTON SINGLE JERSEY, 180GSM  
REFLECTIVE PRINT AT CHEST

SIZES: XXS, XS, S, M, L, XL

# DICKIES BASEBALL

ARTICLE NO. 06210275W



YLD | DUSK YELLOW



BK | BLACK



EOR | ENERGY ORANGE



ROP | ROSE PINK

REGULAR FIT LONG SLEEVE RAGLAN T-SHIRT  
100% COTTON, 180GSM  
CONTRAST RAGLAN SLEEVE DETAILING  
SMALL CHEST PRINT

SIZES: XXS, XS, S, M, L, XL





# Jackets

---

By Williamson-Dickie



# SUMMERFIELD

ARTICLE NO. 07200298W



BACK PRINT

WATERPROOF  
AND BREATHABLE

WHC | WHITE CAMO



EOR | ENERGY ORANGE

WH | WHITE

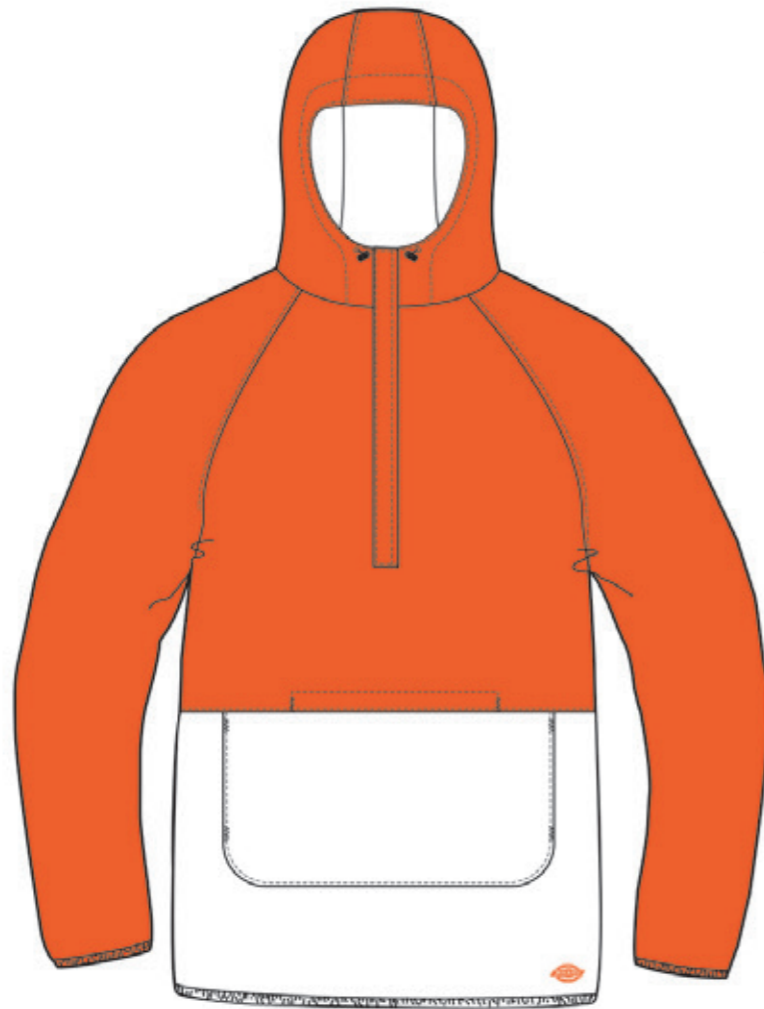
BK | BLACK

STUD FASTENED COACH JACKET  
 OUTER: SOLID COLORS: 100% POLYAMIDE TASLAN 228T, PU CLEAR COATING ON REVERSE SIDE  
 OUTER CAMOUFLAGE: 100% POLYESTER TASLAN 228T, PU CLEAR COATING ON REVERSE SIDE  
 LINING: 100% POLYAMIDE TAFFETA 7000MM WATERPROOF, 4000MVP BREATHABLE, TAPED SEAMS  
 CHEST PRINT AND BACK PRINT

SIZES: XXS, XS, S, M, L, XL

# SMITHFIELD

ARTICLE NO. 07200284W



WATERPROOF  
AND BREATHABLE

EOR | ENERGY ORANGE



BK | BLACK



WH | WHITE

QUARTER ZIP PULL OVER JACKET  
OUTER SOLID COLOR: 100% POLYAMIDE TASLAN 228T  
OUTER CAMO COLOR: 100% POLYESTER TASLAN 228T  
PU CLEAR COATING ON REVERSE SIDE  
LINING: 100% POLYESTER TAFFETA 7000MM WATERPROOF  
4000MVP BREATHABLE, TAPED SEAMS

SIZES: XXS, XS, S, M, L, XL



# SUNDOWN

ARTICLE NO. 07200301W



WHC | WHITE CAMO



BK | BLACK

ZIP UP FLEECE JACKET  
OUTER SOLID COLOR: 100% POLYESTER SHERPA, 550GSM  
OUTER SOLID CONTRAST: 100% POLYAMIDE  
OUTER CAMO CONTRAST: 100% POLYESTER  
LINING: 100% POLYESTER TAFFETA

SIZES: XXS, XS, S, M, L, XL



## Accessories

By Williamson-Dickie

# HIGH ISLAND

ARTICLE NO. 08-430014



BD | BROWN DUCK



BK | BLACK



NV | NAVY

BUM BAG  
600D X 600D 100% POLYESTER  
LINING: 100% POLYESTER  
DIMENSIONS: 12 X 28 X 10.5CM  
SLIP POCKET ON REVERSE  
ADJUSTABLE WAIST STRAP  
CAPACITY: 1.7 LITERS

# MARTINSVILLE

ARTICLE NO. 08-430001



CF | CAMOUFLAGE



BK | BLACK



OG | OLIVE GREEN

BUM BAG  
600D X 600D 100% POLYESTER  
LINING: 100% POLYESTER  
DIMENSIONS: 15 X 35 X 10CM  
ADJUSTABLE WAIST STRAP  
BACK ZIP POCKET

# INDIANAPOLIS

ARTICLE NO. 08-410175



CF | CAMOUFLAGE



BK | BLACK



RB | ROYAL BLUE



CH | CHARCOAL



BD | BROWN DUCK

BACK PACK  
600D X 600D 100% POLYESTER  
LINING: 100% POLYESTER  
DIMENSIONS: 42 X 30 X 16CM  
CAPACITY: 15 LITERS



# DEANVILLE

ARTICLE NO. 08-430013



BK | BLACK



NV | NAVY

PRINTED BACKPACK  
600D X 600D 100% POLYESTER  
LINING: 100% POLYESTER  
DIMENSIONS: 42 X 30 X 16CM  
CAPACITY: 15 LITERS

ONE SIZE

# WEST BRANCH

ARTICLE NO. 08-430007



NV | NAVY



BK | BLACK



BD | BROWN DUCK

MINI BACKPACK  
600D X 600D 100% POLYESTER  
LINING 100% POLYESTER  
DIMENSIONS: 26 X 20 X 9.5CM  
CAPACITY 5.2 LITERS

# GILMER

ARTICLE NO. 08-430015



BD | BROWN DUCK



BK | BLACK



NV | NAVY

CROSS BODY BAG  
600D X 600D 100% POLYESTER  
LINING: 100% POLYESTER  
DIMENSIONS: 21 X 20 X 5CM  
ADJUSTABLE STRAP, 3 ZIPPER COMPARTMENTS  
INTERNAL ZIP POCKET, REVERSE ZIPS  
CAPACITY: 1.9 LITERS

# MERTZON

ARTICLE NO. 08-430008



OG | OLIVE GREEN



CF | CAMOUFLAGE



BK | BLACK

HOLDALL  
600D X 600D 100% POLYESTER  
LINING: 100% POLYESTER  
DIMENSIONS: 27 X 51 X 27CM  
CAPACITY: 37 LITERS  
ADJUSTABLE SHOULDER STRAP  
CONTRAST PU BASE FOR STRUCTURE

# PHOENIXVILLE

ARTICLE NO. 08-430005



BK | BLACK



CF | CAMOUFLAGE



OG | OLIVE GREEN

BACK PACK  
600D X 600D 100% POLYESTER  
LINING: 100% POLYESTER  
DIMENSIONS: 48 X 28 X 12CM  
CAPACITY: 16 LITERS  
ADJUSTABLE FRONT STRAPS  
CONTRAST PU BASE FOR STRUCTURE  
INTERNAL LAPTOP COMPARTMENT AND MESH POCKET

# WOODLAKE

ARTICLE NO. 08-430012



BK | BLACK



NV | NAVY



OG | OLIVE GREEN

CHEST PACK  
100% POLYESTER  
LINING: 100% POLYESTER  
DIMENSIONS: 33 X 15 X 10CM  
CAPACITY: 7.2 LITERS  
BACK ZIP ACCESS

## ELLWOOD CITY

ARTICLE NO. 08-430009



OG | OLIVE GREEN



CF | CAMOUFLAGE



BK | BLACK

BACK PACK  
900D X 900D 100% POLYESTER  
LINING: 100% POLYESTER  
DIMENSIONS: 50 X 30 X 14CM  
CAPACITY: 21 LITERS  
ADJUSTABLE SHOULDER STRAPS  
CLIP WAIST FASTENING  
ADJUSTABLE FRONT STRAPS  
INTERNAL PRINT DETAIL

## MILLCREEK

ARTICLE NO. 08-430006



CF | CAMOUFLAGE



OG | OLIVE GREEN



BK | BLACK

BACKPACK  
900D X 900D 100% POLYESTER  
LINING: 100% POLYESTER  
DIMENSIONS: 52 X 30 X 16CM  
CAPACITY: 22 LITERS  
ADJUSTABLE SHOULDER STRAPS  
CLIP WAIST FASTENING  
INTERNAL DRAWSTRING CLOSURE  
ADJUSTABLE FRONT STRAPS  
SIDE POCKETS WITH STUD CLOSURE  
INTERNAL PRINT DETAIL

## CARTERS LAKE

ARTICLE NO. 08-430002



MR | MAROON



PACKED AWAY



OG | OLIVE GREEN



BK | BLACK

PACKAWAY BACKPACK  
100% POLYESTER RIPSTOP  
DIMENSIONS: 43 X 29 X 12CM  
CAPACITY: 9.8 LITERS  
FOLDS AWAY INTO THE FRONT POCKET

## BROADHEAD CREEK

ARTICLE NO. 08-430003



OG | OLIVE GREEN



PACKED AWAY



BK | BLACK



MR | MAROON

PACKAWAY HOLDALL  
100% POLYESTER RIPSTOP  
DIMENSIONS: 25 X 45 X 25CM  
CAPACITY: 28 LITERS  
FOLDS AWAY INTO INTERNAL POCKET

## PENWELL

ARTICLE NO. 08-430011



CF | CAMOUFLAGE



BK | BLACK



BD | BROWN DUCK

CANVAS BUMBAG  
100% COTTON CANVAS 16oz  
LINING: 100% POLYESTER  
DIMENSIONS: SIZE: 12 X 25 X 10CM  
CAPACITY: 3 LITERS

## VALLEY SPRINGS

ARTICLE NO. 08-410333



CF | CAMOUFLAGE



BK | BLACK

CANVAS MESSENGER BAG  
100% COTTON CANVAS 16oz  
LINING: 100% POLYESTER  
DIMENSIONS: 30 X 42 X 23CM  
CAPACITY: 16 LITERS  
INNER LAPTOP COMPARTMENT, ZIP POCKET, MOBILE PHONE AND PEN POCKETS  
ADJUSTABLE SHOULDER STRAP

## OWENSBURG

ARTICLE NO. 08-410306



CF | CAMOUFLAGE



BD | BROWN DUCK

CANVAS BACK PACK  
100% COTTON CANVAS 16oz  
LINING: 100% POLYESTER  
DIMENSIONS: 43 X 29 X 15CM  
CAPACITY: 15 LITERS

## NEWBURG

ARTICLE NO. 08-410305



CF | CAMOUFLAGE



BOTTOM STRAP FEATURE



BD | BROWN DUCK

CANVAS HOLDALL  
100% COTTON CANVAS 16oz  
LINING: 100% POLYESTER  
DIMENSIONS: 33 X 59 X 33CM  
CAPACITY: 50 LITERS  
INNER SLIP POCKET, ADJUSTABLE SHOULDER STRAP  
BOTTOM STAP FEATURE

# OAKLAND

ARTICLE NO. 08-440014



WH | WHITE



BK | BLACK



CFO | CAMOUFLAGE/ORANGE

SNAPBACK CAP  
100% COTTON TWILL  
RUBBERISED LOGO DETAIL

ONE SIZE

# MORRILTON

ARTICLE NO. 08-410341



NV | NAVY



MR | MAROON



BK | BLACK



DKO | DARK OLIVE



WH | WHITE

FITTED CAP  
97% COTTON 3% SPANDEX  
CURVED PEAK

ONE SIZE

# ASPINWALL

ARTICLE NO. 08-440009



BK | BLACK



MR | MAROON



DKH | DARK KHAKI

UNSTRUCTURED CAP  
100% COTTON  
CURVED PEAK, BADGE DETAIL, GARMENT WASHED

ONE SIZE

# MULDOON

ARTICLE NO. 08-440031



BK | BLACK



WHITE | WHITE



GYM | GRAY MELANGE



NV | NAVY



BD | BROWN DUCK

5 PANEL SNAPBACK  
BK, BD, NV, WH: 100% COTTON  
GYM: 85% ACRYLIC 15% WOOL  
EMBROIDERED BADGE DETAIL

ONE SIZE

# LOCKHART

ARTICLE NO. 08-440030



WH | WHITE



BK | BLACK

SNAPBACK CAP  
100% COTTON  
LARGE LOGO DETAIL

ONE SIZE

# SAN MARCOS

ARTICLE NO. 08-440034



DKO | DARK OLIVE



BK | BLACK



NV | NAVY

5 PANEL SNAPBACK  
100% COTTON  
PRINTED DETAIL  
PLASTIC SNAP ADJUSTER  
CONTRAST UNDERPEAK

ONE SIZE

# WILLOW CITY

ARTICLE NO. 08-440036



WH | WHITE



BSK | BLUE SKY



DKO | DARK OLIVE



EOR | ENERGY ORANGE



GYM | GRAY MELANGE



MR | MAROON



NV | NAVY



ROP | ROSE PINK



BD | BROWN DUCK



YLD | DUSK YELLOW

6 PANEL UNSTRUCTURED CAP  
100% WASHED CHINO COTTON  
EMBROIDERED LOGO DETAIL  
VELCRO ADJUSTER

ONE SIZE

# VAN COURT

ARTICLE NO. 08-440035



BK | BLACK



BSK | BLUE SKY



MR | MAROON

TRUCKER CAP  
FRONT PANEL AND PEAK: 100% COTTON ; BACK PANELS: 100% POLYESTER  
EMBROIDERED BADGE DETAIL

ONE SIZE

# LANE CITY

ARTICLE NO. 08-440027



WH | WHITE



NV | NAVY



BK | BLACK



BD | BROWN DUCK

5 PANEL TRUCKER CAP  
FRONT PANEL AND PEAK: 100% COTTON ; BACK PANELS: 100% POLYESTER  
BADGE DETAIL

ONE SIZE

# PREMONT

ARTICLE NO. 08-440032



KH | KHAKE

5 PANEL CAP  
65% POLYESTER 35% COTTON 8.5oz TWILL

ONE SIZE



BK | BLACK



WH | WHITE

# ADDISON

ARTICLE NO. 08-440022



BK | BLACK

BUCKET HAT  
65% POLYESTER 35% COTTON 8.5oz TWILL

ONE SIZE

CIRCUMFERENCE: 58CM



WH | WHITE



KH | KHAKE



# JACKSONPORT

ARTICLE NO. 08-410340



**BK** | BLACK

FLAT CAP  
97% POLYESTER 3% SPANDEX  
LINING: 100% POLYESTER SATIN

ONE SIZE

# TUCSON

ARTICLE NO. 08-410164



**BK** | BLACK

FLAT CAP  
90% POLYESTER 10% WOOL TWEED  
LINING: 100% POLYESTER SATIN

ONE SIZE



**BR** | BROWN



**GR** | GREEN

# MINNESOTA

ARTICLE NO. 08-410157



**TM** | TIMBER



**BD** | BROWN DUCK



**MR** | MAROON



**NV** | NAVY



**BK** | BLACK



**CH** | CHARCOAL

STARTER CAP  
100% COTTON CANVAS

ONE SIZE

# JAMESTOWN

ARTICLE NO. 08-410225



INSIDE DETAILING

BD | BROWN DUCK



BK | BLACK

STARTER CAP  
85% ACRYLIC 15% WOOL  
INTERIOR PRINT DETAILING

ONE SIZE

# ALASKA

ARTICLE NO. 08-410153



EOR | ENERGY ORANGE



BK | BLACK



MR | MAROON



DB | DARK BROWN



BD | BROWN DUCK



DGM  
DARK GRAY MELANGE



OG | OLIVE GREEN



GYM | GRAY MELANGE



NV | NAVY



DN | DARK NAVY



BSK | BLUE SKY



YLD | DUSK YELLOW



ROP | ROSE PINK



WH | WHITE

BEANIE HAT  
100% ACRYLIC

ONE SIZE

# ORCUTT

ARTICLE NO. 08-410190



WHC | WHITE CAMO



MR | MAROON

DN | DARK NAVY

BD | BROWN DUCK

RB | ROYAL BLUE

BK | BLACK

CH | CHARCOAL

CF | CAMOUFLAGE

WH | WHITE

BELT  
100% POLYESTER WEBBING

SIZE: 120CM

# SCOTTSVILLE

ARTICLE NO. 08-470004



RDB | RED/BLACK    BDB | BROWN DUCK/BLACK    PGB | PINE GREEN/BLACK



WHB | WHITE/BLACK

RDB | RED/BLACK

BELT  
100% POLYESTER WEBBING

SIZE: 120CM

# WEBSTER

ARTICLE NO. 08-470003



KH | KHAKI

BK | BLACK

WH | WHITE

BELT  
65% POLYESTER 35% COTTON 8.5oz TWILL  
BOTTLE OPENER DETAIL IN BUCKLE

SIZE: 120CM

# ATLANTIC CITY

ARTICLE NO. 08-410196



RB | ROYAL BLUE



BU | BLUE



BK | BLACK

SOCKS  
75% COTTON, 13% POLYESTER, 10% ELASTODIENE, 2% ELASTANE  
PACK CONTAINS 3 PAIRS OF SOCKS OF THE SAME COLOR

SIZES: 39-42 (UK 6-9) 43-46 (UK 9-11)

# MADISON HEIGHTS

ARTICLE NO. 08 490005



AS | ASSORTED



BLACK/BLUE



ORANGE/PINK



NAVY/YELLOW

SOCKS  
71% COTTON, 20% POLYESTER, 7% ELASTODIENE, 2% ELASTANE  
PACK CONTAINS 3 PAIRS OF SOCKS IN ASSORTED COLORS

SIZES: 39-42 (UK 6-9) 43-46 (UK 9-11)

# NEW BOSTON

ARTICLE NO. 08-490006



AS | ASSORTED



BLACK



NAVY



OLIVE GREEN

SOCKS  
74% COTTON, 15% POLYAMIDE, 9% ELASTODIENE, 2% ELASTANE  
PACK CONTAINS 3 PAIRS OF SOCKS IN ASSORTED COLORS

SIZES: 39-42 (UK 6-9) 43-46 (UK 9-11)